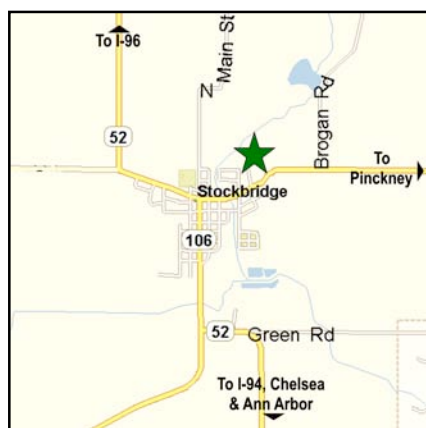
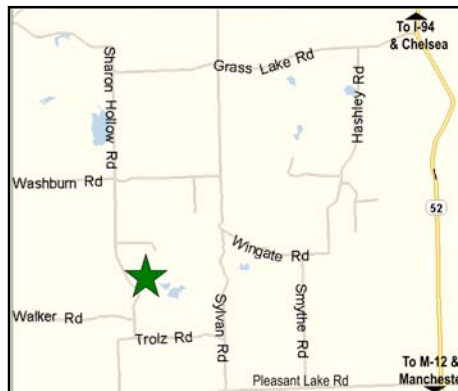


Visit our nature preserves!

Sharon Hills Preserve

This 67-acre natural area includes hiking trails, open fields, oak-hickory woodlands, and kettle wetlands.

To visit: Sharon Hills is southwest of Ann Arbor in Sharon Township, on Sharon Hollow Road between Walker and Washburn Roads. From I-94, exit onto M-52 and go south to Grass Lake Road, go west to Sharon Hollow Road, and go south two miles. Look for our signs on the east side of the road and park in the grassy parking area.



Beckwith Conservancy

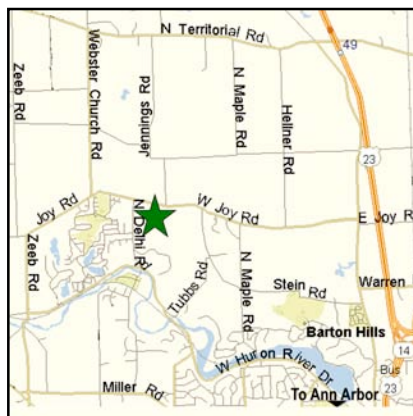
This 30-acre preserve contains open fields, woods, and frontage on Portage Creek.

To visit: Beckwith is located in the Village of Stockbridge at the end of Maple Street. Park along the north side of M-106 just east of Maple Street, at the east end of the woods. Walk along the woods edge to the trailhead at the southeast corner of the preserve.

Woodland Preserve

This 13-acre preserve features open fields, woodlands, and creek frontage.

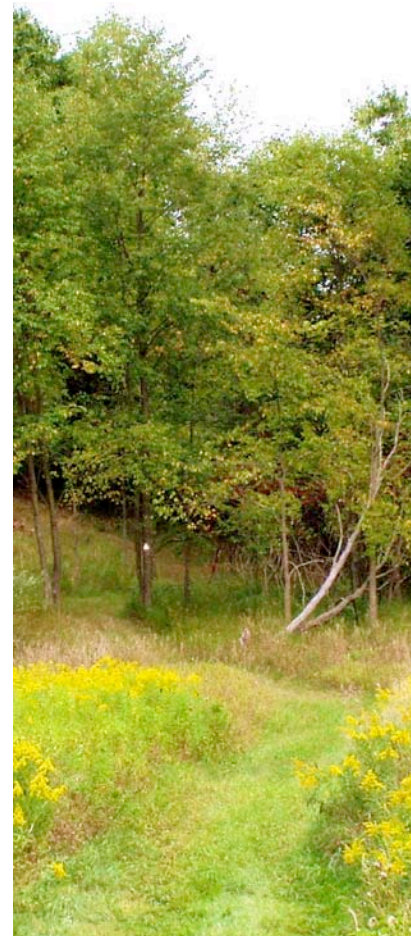
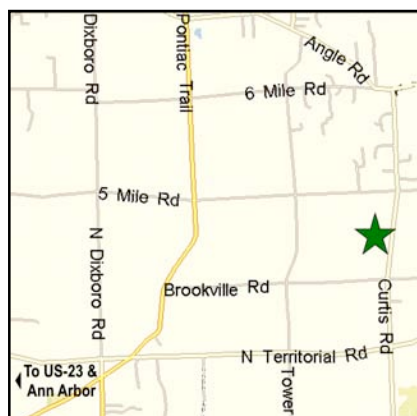
To visit: Woodland Preserve is located just northwest of Ann Arbor in Webster Township, along Joy Road just west of Jennings Road. Park in front of the open field on the south side of Joy Road.



Creekshead Preserve

This quiet 27-acre natural area contains beech-maple forest, wooded wetlands, and spectacular spring wildflower blooms.

To visit: Creekshead is just northeast of Ann Arbor in Salem Township, on Curtis Road between Brookville and Five Mile Roads. Park along the west side of the road in front of the woods and please watch for traffic.



Along the trail at Washtenaw Land Trust's Sharon Hills Preserve

Protecting natural areas and open spaces, here where you live